

TEXMO®



SINGLE PHASE

OPENWELL SUBMERSIBLE MONOBLOCK

ASM SP SERIES



INSTALLATION & SPARE PARTS MANUAL

MANUFACTURED BY :

AQUASUB ENGINEERING UNIT-II

S.F.No. 308, Vethalaikali Palayam,

N.S.N. Palayam Post,

Coimbatore - 641 031.

TEXMO OPENWELL

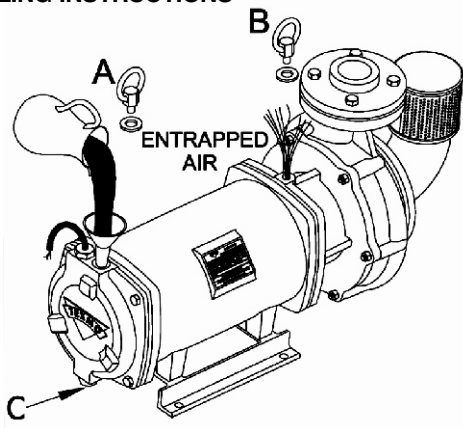
SUBMERSIBLE MONOBLOCK PUMP - ASM SP SERIES

Dear Customer,

Please follow the instructions given in this manual to install and maintain our submersible pumpset to get reliable operation.

When you order spare parts in future, please inform the nameplate details, viz., Serial Number, Motor type, Pump type and other data. Spare parts list of the pumpset is given at the end of this manual for your reference.

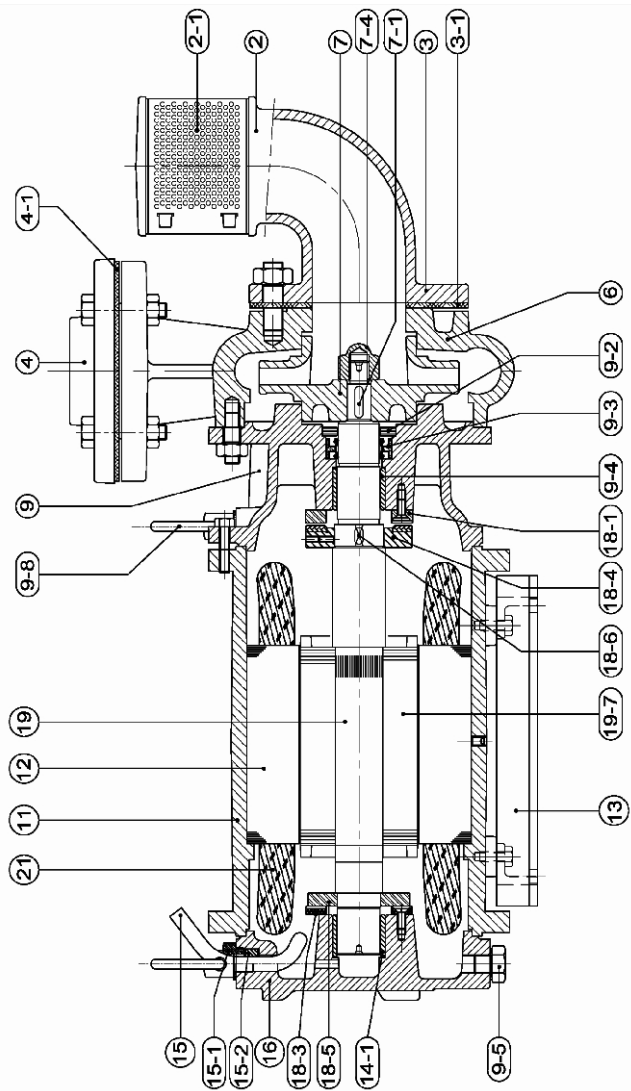
WATER FILLING INSTRUCTIONS



1. Open both the water filling plugs (A) and (B)
2. Check the tightness of the drain plug (C)
3. Put the funnel in plug hole (A)
4. Use only clear cold drinking water for filling
5. Pour the water till the water overflows in plug hole (B)
6. Wait till all the air bubbles inside the motor escape.
7. Close both the plugs tightly.

FOR INSTALLATION

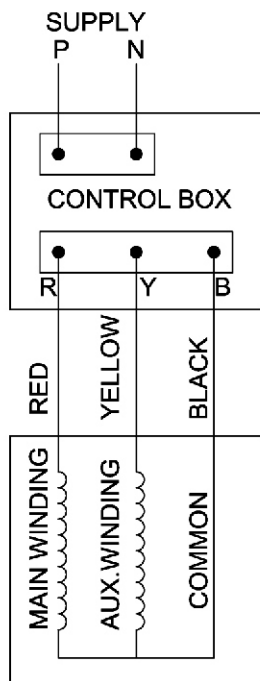
1. The openwell submersible pump should be connected to a single phase, 240 Volts, 50 cycles, AC supply through control panel.
2. Ensure proper earthing is done at the ground level.
3. The monoblock is normally provided with sufficient length of cable. If extra cable is to be used number of joints in the cable should be as minimum as possible.
4. Wires and connections should be properly insulated, to avoid fatal shocks.
5. Only recommended pipe size should be used. Small pipe size, nipples, elbows, bends all give rise to head losses and should either be eliminated or used sparingly.
6. Adequate supports should be provided to delivery pipe.
7. Care should be taken not to submerge the monoblock in clay or loose soil at the bottom. In the above case, fix the monoblock in proper frame and ensure that it is placed above the clay or loose soil.



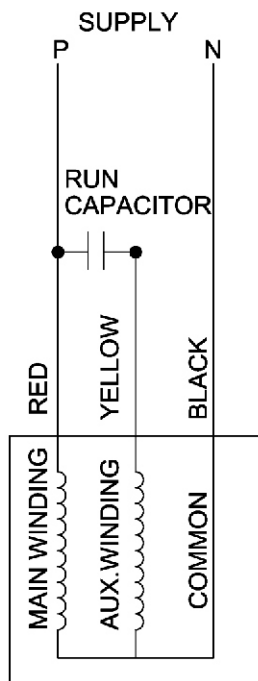
SECTIONAL VIEW OF ASMSP MODEL

SPARE PARTS LIST : ASMSP Series

Part No	Part Name	Quantity Required	Material
2	Suction Bracket	1	Cast Iron
2-1	Strainer	1	Stainless Steel
3	Suction Flange	1	Cast Iron
3-1	Suction Flange Washer	1	Rubber
4	Delivery Flange	1	Cast Iron
4-1	Delivery Flange Washer	1	Rubber
6	Casing	1	Cast Iron
7	Impeller	1	Cast Iron / Stainless Steel
7-1	Key - Impeller	1	Stainless Steel
7-4	Lock Nut Impeller	1	Extruded Brass
9	Front Cover	1	Cast Iron
9-2	Sand Guard	1	Nylon GFN
9-3	Oil seal	1	Rubber
9-4	Bush - Carbon (Front)	1	Carbon
9-5	Plug - Drain	1	Mild Steel
9-8	Eye Bolt	1 / 2	Forged Steel
11	Frame	1	Cast Iron
12	Stator Assembly	1	-
13	Base Frame	1	Mild Steel
14-1	Bush - Carbon (Rear)	1	Carbon
15	Cable	1	-
15-1	Cable Gland	1	Extruded Brass
15-2	Cable Bush	1	Rubber
16	Rear Cover	1	Cast Iron
18-1	Thrust Ring - Front	1	Stainless Steel
18-3	Thrust Ring - Rear (Hylam)	1	Hylam Fabric
18-4	Thrust Coupling - Front	1	Cast Iron with Carbon
18-5	Thrust Coupling Collar - Rear	1	Stainless Steel
18-6	Key - Thrust coupling	1	Stainless Steel
19	Shaft	1	Stainless Steel
19-7	Rotor	1	Aluminium
21	Winding Set	1	PP Wire Set



**MOTOR
WITH CONTROL BOX**



**MOTOR
WITHOUT CONTROL BOX**

MODEL	RUN CAPACITOR
1.0 HP (ASM SP 7 SERIES)	36 mfd 440 V AC
1.5 HP (ASM SP 11 SERIES)	2x25 mfd (50 mfd) 440 V AC
2.0 HP (ASM SP 15 SERIES)	2x25 mfd (50 mfd) 440 V AC
3.0 HP (ASM SP 22 SERIES)	3x36 mfd (108 mfd) 440 V AC
5.0 HP (ASM SP 37 SERIES)	For Starting (2 x 25 mfd) + (2 x 36 mfd) + (200 - 250 mfd) For Running (2 x 25 mfd) + (2 x 36 mfd)
7.5 HP (ASM SP 55 SERIES)	For Starting (6 x 25 mfd) + (150 - 200 mfd) For Running (6 x 25 mfd)
Capacitor Voltage	Starting Capacitor : 230 V AC. Running Capacitor : 440 V AC.

WARRANTY FOR MONOBLOCK:

Aquasub Engineering Unit-II warrants to the purchaser of this **TEXMO** product, that for a period of 12 months commencing from the date of purchase of the product, Aquasub Engineering Unit-II will repair or replace free of charge any part or parts of the product, should Aquasub Engineering Unit-II be fully satisfied in its sole discretion, that the defect/s is / are due to faulty material or workmanship only. The warranty will be governed by the following clauses:

1. Aquasub Engineering Unit-II or their Authorised Service Agent / Dealer will repair / replace all parts that are failing due to faulty material or defective workmanship pertaining to the above product.
2. Only Aquasub Engineering Unit-II or its Authorised Service Agent / Dealer can service / repair or attend to install / reinstall the above product.
3. All expenses incurred in collecting the units or parts thereof from the Authorised Service Centre or the Dealer of Aquasub Engineering Unit-II as well as expenses incurred in connection with deputing of service personnel / technicians towards to and fro travel conveyance and other incidentals etc., will be borne by the customer.
4. The warranty extended therein is in lieu of all implied conditions and warranties under the law and is confined to the repair or replacement of defective parts and does not cover any consequential or resulting liability, damage or loss arising from such defects. Further more, the warranty in no case, shall extend to the payment or any monetary consideration whatsoever, of the replacement or return of the product as a whole.
5. The warranty is issued subject to jurisdiction of Coimbatore Court of Law.
6. The warranty is covered by Force Majeure clause. In the event if the above product is struck by any natural calamity, this warranty stands null and void.

This Warranty is not valid in case of any of the following events.

- a. This Pumpset is not used according to the instructions given in this Installation and Operation manual.
- b. If the electrical power supply voltage is not within the stipulated norms.
- c. Any repair work / installation carried out by a person other than Aquasub Engineering Unit-II Service Centre / Service Agent.
- d. The serial Number is deleted, defaced or altered.

WARRANTY CARD

(Please retain this for your personal record)

Product Name & Model No. Serial No.

Name and Address of Dealer

Bill No. Date of Purchase |

® Registered Trademark of Aquasub Engineering & Aquapump Industries for Texmo brand products listed.